

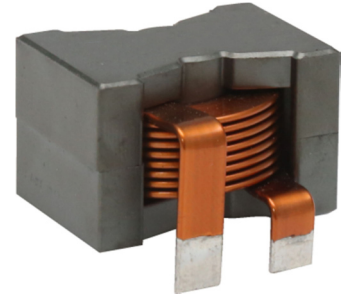
HIGH CURRENT POWER INDUCTOR

大电流功率电感

■ EEB32A

Features

- Susing flat wire, and SMD type.
采用扁平线，贴片类型
- Low radiation noise by magnetically shielded construction
闭合磁路封装，低辐射
- High current, Low resistance.
大电流，低电阻
- Operating temperature : -40°C~+125°C.
工作温度：-40°C~+125°C



Applications

- high efficiency DC/DC converters. 高效 DC/DC 转换器
- Single and polyphase buck converters. 单相、多相降压转换器
- Filter for audio applications. 音频滤波应用
- Optimized for high current boost applications. 大电流升压应用优化

Electrical characteristics

Part number 料号	Inductance 电感量 μH	DC resistance 直流电阻 mΩ max.	DC saturation current 直流饱和电流 A max.(typ.)			Temperature rise current 温升电流 A max.	
			ΔL ≤ 10%	ΔL ≤ 20%	ΔL ≤ 30%	ΔT ≤ 20°C	ΔT ≤ 40°C
EEB32A-222	2.2 ± 20%	1.0	94(98)	97.5(>100)	>100	65	90
EEB32A-332	3.3 ± 20%	1.35	77(81.5)	83(86.3)	85(88.1)	58	72
EEB32A-602	6.0 ± 20%	1.8	54(58.6)	60(65)	64(67.2)	42.5	60
EEB32A-103	10 ± 10%	2.3	40(45.0)	48(52.5)	51(55.5)	42.5	60

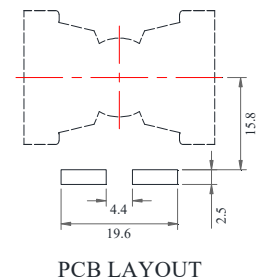
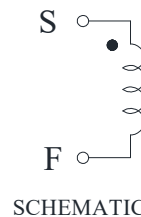
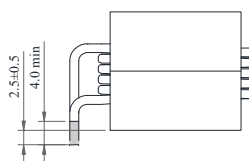
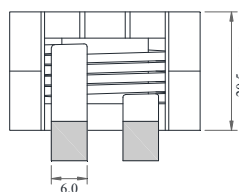
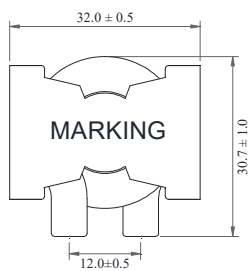
Remark

- Inductance is measured with a LCR meter 4284A or equivalent.
Test frequency at 100kHz
- DC resistance is measured with 16502 Milliohm Meter , or equivalent.
Reference ambient temperature 25°C

备注

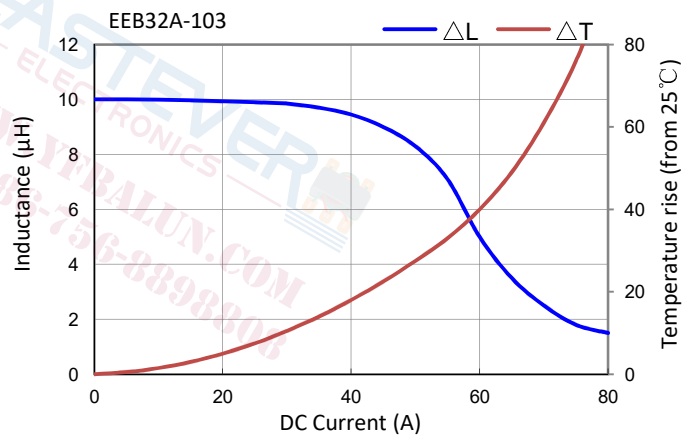
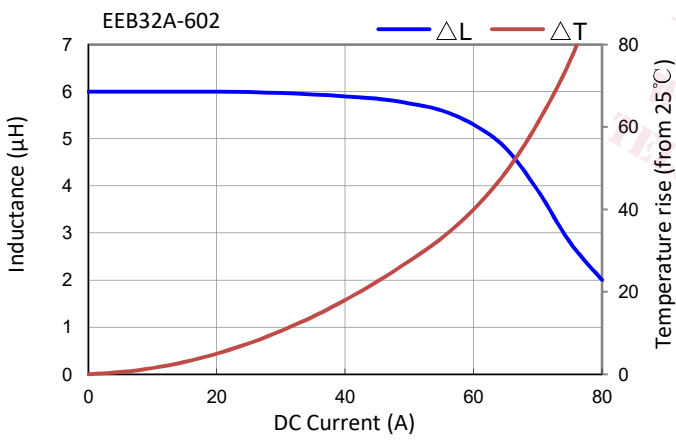
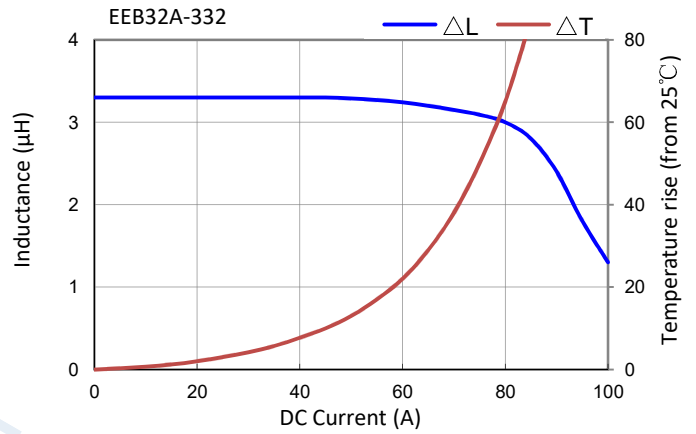
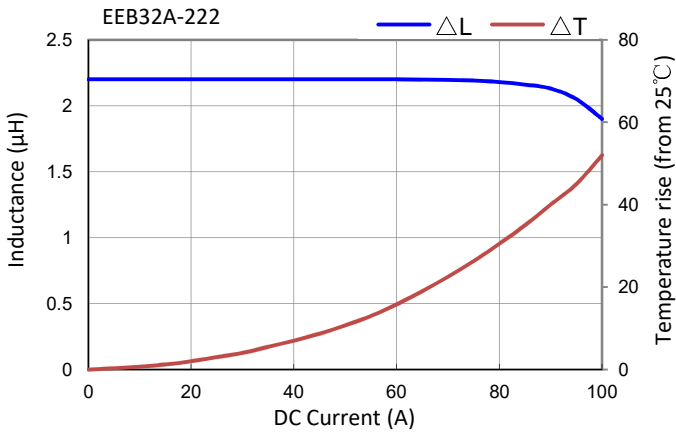
- 电感量测试采用 4284A 数字电桥或同等仪器；
测试频率 100KHz
- 直流电阻测试采用 16502 毫欧表或同等仪器；
环境温度 25°C

Dimensions



■ EEB32A

Electrical Characteristic Curve



EASTEVEER
ELECTRONICS
WWW.YFBALUN.COM
TEL:+86-756-8898808