

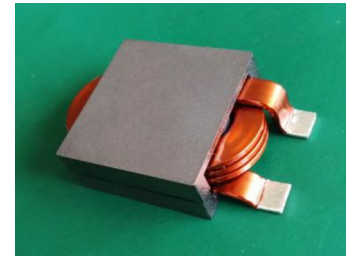
EEC26L

HIGH CURRENT POWER INDUCTOR

大电流功率电感

Features

- Susing flat wire, and SMD type.
采用扁平线，贴片类型
- Low radiation noise by magnetically shielded construction
闭合磁路封装，低辐射
- High current, Low resistance.
大电流，低电阻
- Operating temperature : -40°C~+125°C.
工作温度：-40°C~+125°C



Applications

- high efficiency DC/DC converters. 高效 DC/DC 转换器
- Single and polyphase buck converters. 单相、多相降压转换器
- Filter for audio applications. 音频滤波应用
- Optimized for high current boost applications. 大电流升压应用优化

Electrical characteristics

Part number 料号	Inductance 电感量 μH	DC resistance 直流电阻 mΩ max. (typ.)	DC saturation current 直流饱和电流 A max.(typ.)			Temperature rise current 温升电流 A max.	
			ΔL ≤ 10%	ΔL ≤ 20%	ΔL ≤ 30%	ΔT ≤ 20°C	ΔT ≤ 40°C
EEC26L-152	1.5 ± 20%	1.1(0.955)	100(>100)	>100 (>100)	>100 (>100)	60	78
EEC26L-222	2.2 ± 20%	1.1(0.955)	82.0(85.0)	84.0(90.0)	84.8(91.5)	60	78
EEC26L-332	3.3 ± 20%	1.1(0.955)	47.5(50.0)	54.0(54.5)	57.0(56.5)	60	78
EEC26L-472	4.7 ± 20%	1.1(0.955)	33.0(37.0)	36.9(40.5)	39.0(42.5)	60	78

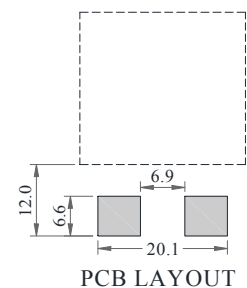
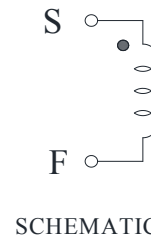
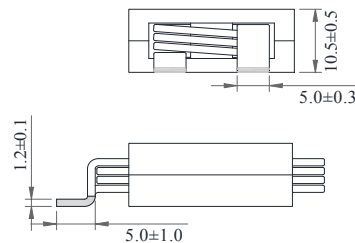
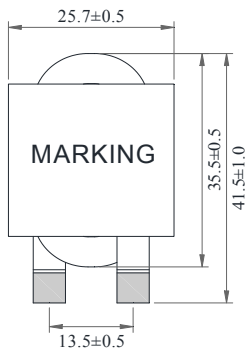
Remark

- Inductance is measured with a LCR meter 4284A or equivalent.
Test frequency at 100kHz
- DC resistance is measured with 16502 Milliohm Meter , or equivalent.
Reference ambient temperature 25°C

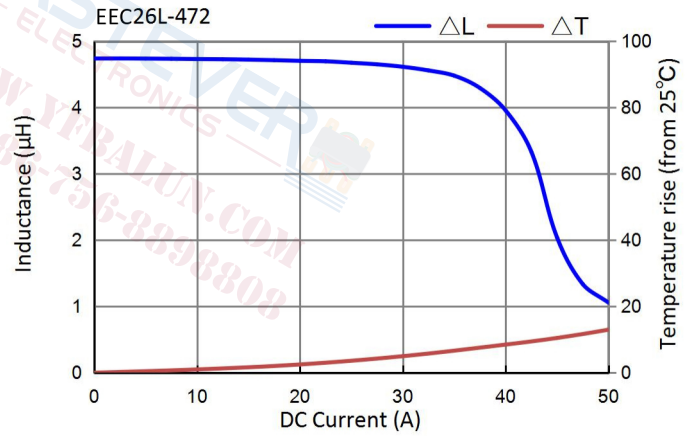
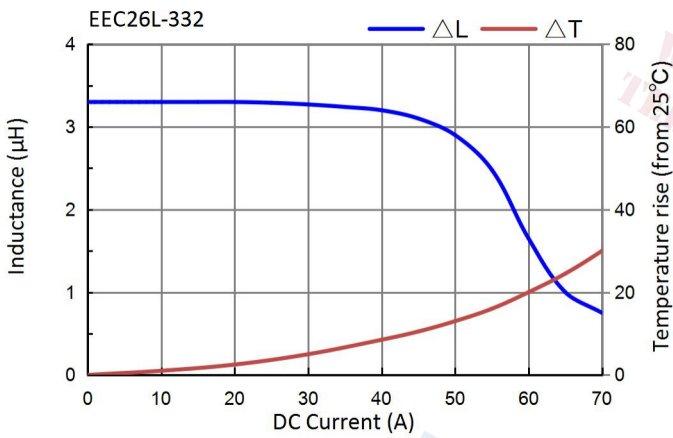
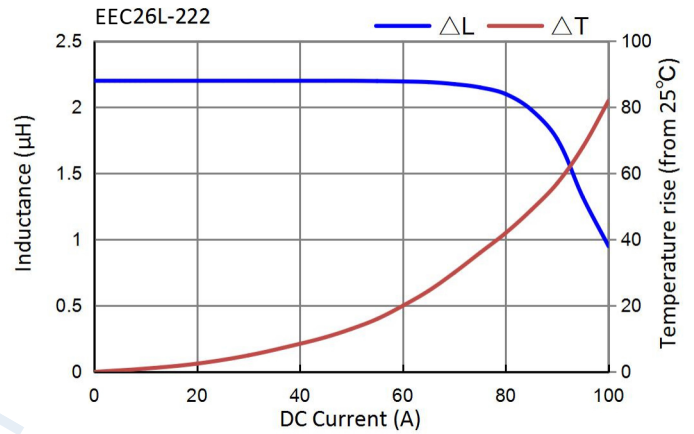
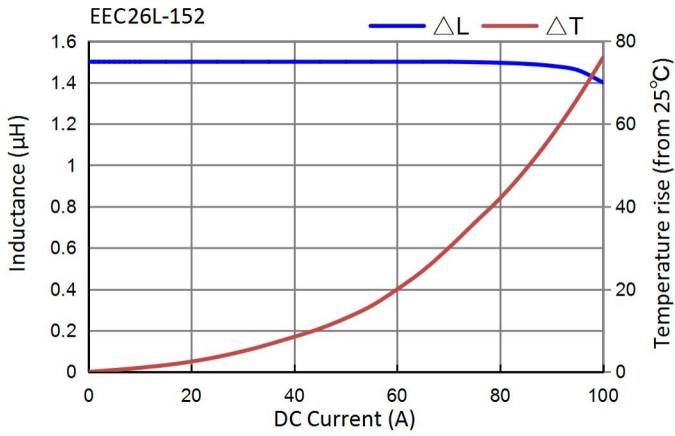
备注

- 电感量测试采用 4284A 数字电桥或同等仪器；
测试频率 100KHz
- 直流电阻测试采用 16502 毫欧表或同等仪器；
环境温度 25°C

Dimensions



Electrical Characteristic Curve



EASTEVEER
ELECTRONICS
WWW.YFBALUN.COM
TEL:+86-756-8898808